

## Anti-MEST antibody (Internal) (STJ71915)

### GENERAL INFORMATION

Product Type	Primary antibodies
Applications	Pep-ELISA/WB
Host / Source	Goat
Reactivity	Human/Mouse/Rat/Dog/Cow

### PRODUCT PROPERTIES

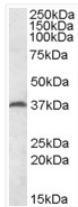
Clonality	Polyclonal
Concentration	0.5 mg/mL
Conjugation	Unconjugated
Purification	Purified from goat serum by ammonium sulphate precipitation followed by antigen affinity chromatography using the immunizing peptide.
Dilution Range	Peptide ELISA: antibody detection limit dilution 1:8000. WB: Approx 37kDa band observed in Mouse and Rat Testis lysates (calculated MW of 37.6kDa according to Human NP_803490.1 and 38.8kDa according to Rat NP_001009617.1). Recommended concentrati
Formulation	0.5 mg/ml in Tris saline, 0.02% sodium azide, pH7.3 with 0.5% bovine serum albumin. NA
Isotype	IgG
Storage Instruction	Store at -20°C on receipt and minimise freeze-thaw cycles.

### TARGET INFORMATION

Gene ID	<a href="#">4232</a>
Gene Symbol	<a href="#">MEST</a>
UniProt ID	<a href="#">MEST_HUMAN</a>
Immunogen Region	Internal
Immunogen Sequence	QELLYRYKQNRSGR
Specificity	This antibody is expected to recognize both reported isoforms (NP_002393.2; NP_803490.1). Reported variants NP_803490.1 and NP_803491.1 represent identical protein.

### ADDITIONAL INFORMATION

Note STRICTLY FOR FURTHER SCIENTIFIC RESEARCH USE ONLY (RUO). MUST NOT TO BE USED IN DIAGNOSTIC OR THERAPEUTIC APPLICATIONS.



STJ71915 (0.2 µg/ml) staining of Mouse Testis lysate (35 µg protein in RIPA buffer). Primary incubation was 1 hour. Detected by chemiluminescence.