

## Anti-ETF-4/TEAD2 antibody (Internal) (STJ71877)

### GENERAL INFORMATION

|               |                         |
|---------------|-------------------------|
| Product Type  | Primary antibodies      |
| Applications  | Pep-ELISA/WB            |
| Host / Source | Goat                    |
| Reactivity    | Human/Mouse/Rat/Dog/Cow |

### PRODUCT PROPERTIES

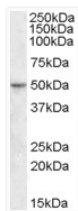
|                     |                                                                                                                                                                                                                                                          |
|---------------------|----------------------------------------------------------------------------------------------------------------------------------------------------------------------------------------------------------------------------------------------------------|
| Clonality           | Polyclonal                                                                                                                                                                                                                                               |
| Concentration       | 0.5 mg/mL                                                                                                                                                                                                                                                |
| Conjugation         | Unconjugated                                                                                                                                                                                                                                             |
| Purification        | Purified from goat serum by ammonium sulphate precipitation followed by antigen affinity chromatography using the immunizing peptide.                                                                                                                    |
| Dilution Range      | Peptide ELISA: antibody detection limit dilution 1:16000.<br>WB: Approx 50kDa band observed in Human Colon and Human Ileum lysates (calculated MW of 49.2kDa according to NP_003589.1). Recommended concentration: 1-3µg/ml. Primary incubation was 1 ho |
| Formulation         | 0.5 mg/ml in Tris saline, 0.02% sodium azide, pH7.3 with 0.5% bovine serum albumin. NA                                                                                                                                                                   |
| Isotype             | IgG                                                                                                                                                                                                                                                      |
| Storage Instruction | Store at -20°C on receipt and minimise freeze-thaw cycles.                                                                                                                                                                                               |

### TARGET INFORMATION

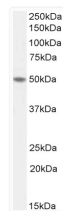
|                    |                                                                        |
|--------------------|------------------------------------------------------------------------|
| Gene ID            | <a href="#">8463</a>                                                   |
| Gene Symbol        | <a href="#">TEAD2</a>                                                  |
| UniProt ID         | <a href="#">TEAD2_HUMAN</a>                                            |
| Immunogen Region   | Internal                                                               |
| Immunogen Sequence | EPPDAVDSYQRH                                                           |
| Specificity        | This antibody is not expected to cross-react with other TEAD proteins. |

### ADDITIONAL INFORMATION

Note STRICTLY FOR FURTHER SCIENTIFIC RESEARCH USE ONLY (RUO). MUST NOT TO BE USED IN DIAGNOSTIC OR THERAPEUTIC APPLICATIONS.



STJ71877 (1µg/ml) staining of Human Ileum lysate (35µg protein in RIPA buffer). Detected by chemiluminescence.



STJ71877 (1µg/ml) staining of Human Colon lysate (35µg protein in RIPA buffer). Detected by chemiluminescence.