

Anti-ATG4C antibody (C-Term) (STJ71866)

GENERAL INFORMATION

| | |
|---------------|--------------------|
| Product Type | Primary antibodies |
| Applications | Pep-ELISA/WB |
| Host / Source | Goat |
| Reactivity | Human/Dog/Cow |

PRODUCT PROPERTIES

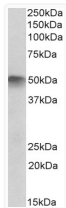
| | |
|---------------------|--|
| Clonality | Polyclonal |
| Concentration | 0.5 mg/mL |
| Conjugation | Unconjugated |
| Purification | Purified from goat serum by ammonium sulphate precipitation followed by antigen affinity chromatography using the immunizing peptide. |
| Dilution Range | Peptide ELISA: antibody detection limit dilution 1:16000. WB: Approx 50kDa band observed in Human Skeletal Muscle lysates (calculated MW of 52.5kDa according to NP_116241.2). Recommended concentration: 2-6µg/ml. |
| Formulation | 0.5 mg/ml in Tris saline, 0.02% sodium azide, pH7.3 with 0.5% bovine serum albumin. NA |
| Isotype | IgG |
| Storage Instruction | Store at -20°C on receipt and minimise freeze-thaw cycles. |

TARGET INFORMATION

| | |
|--------------------|---|
| Gene ID | 84938 |
| Gene Symbol | ATG4C |
| UniProt ID | ATG4C_HUMAN |
| Immunogen Region | C-Term |
| Immunogen Sequence | EDEKKQLKRFSTEE |
| Specificity | Reported variants represent identical protein: NP_116241.2, NP_835739.1 |

ADDITIONAL INFORMATION

Note STRICTLY FOR FURTHER SCIENTIFIC RESEARCH USE ONLY (RUO). MUST NOT TO BE USED IN DIAGNOSTIC OR THERAPEUTIC APPLICATIONS.



STJ71866 (2µg/ml) staining of Human Skeletal Muscle lysate (35µg protein in RIPA buffer). Primary incubation was 1 hour. Detected by chemiluminescence.