

## Anti-EWS/EWSR1 antibody (Internal) (STJ71832)

### GENERAL INFORMATION

Product Type	Primary antibodies
Applications	Pep-ELISA/WB/IHC
Host / Source	Goat
Reactivity	Human/Mouse/Rat/Pig/Cow

### PRODUCT PROPERTIES

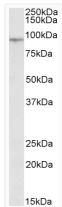
Clonality	Polyclonal
Concentration	0.5 mg/mL
Conjugation	Unconjugated
Purification	Purified from goat serum by ammonium sulphate precipitation followed by antigen affinity chromatography using the immunizing peptide.
Dilution Range	Peptide ELISA: antibody detection limit dilution 1:64000. WB: Approx. 90kDa band observed in nuclear lysates of cell line HeLa (calculated MW of 68.5kDa according to NP_053733.1). This molecular weight is routinely observed by other sources. Reco
Formulation	0.5 mg/ml in Tris saline, 0.02% sodium azide, pH7.3 with 0.5% bovine serum albumin. NA
Isotype	IgG
Storage Instruction	Store at -20°C on receipt and minimise freeze-thaw cycles.

### TARGET INFORMATION

Gene ID	<a href="#">2130</a>
Gene Symbol	<a href="#">EWSR1</a>
UniProt ID	<a href="#">EWS_HUMAN</a>
Immunogen Region	Internal
Immunogen Sequence	TSYDQSSYSQQNTYG
Specificity	This antibody is expected to recognize all five reported isoforms (NP_053733.2; NP_005234.1; NP_001156757.1; NP_001156758.1; NP_001156759.1).

### ADDITIONAL INFORMATION

Note STRICTLY FOR FURTHER SCIENTIFIC RESEARCH USE ONLY (RUO). MUST NOT TO BE USED IN DIAGNOSTIC OR THERAPEUTIC APPLICATIONS.



STJ71832 (0.3 µg/ml) staining of nuclear HeLa lysate (35 µg protein in RIPA buffer). Primary incubation was 1 hour. Detected by chemiluminescence.