

## Anti-AREB6/ZEB1 antibody (Internal) (STJ71831)

### GENERAL INFORMATION

Product Type	Primary antibodies
Applications	Pep-ELISA/WB/IF
Host / Source	Goat
Reactivity	Human/Mouse/Rat

### PRODUCT PROPERTIES

Clonality	Polyclonal
Concentration	0.5 mg/mL
Conjugation	Unconjugated
Purification	Purified from goat serum by ammonium sulphate precipitation followed by antigen affinity chromatography using the immunizing peptide.
Dilution Range	Peptide ELISA: antibody detection limit dilution 1:32000. WB: Approx. 100kDa band observed in Mouse Heart lysates (calculated MW of 122kDa according to Human NP_110378.3 and Mouse NP_035676.1). Recommended concentration: 0.05-0.2µg/ml. Primary inc
Formulation	0.5 mg/ml in Tris saline, 0.02% sodium azide, pH7.3 with 0.5% bovine serum albumin. NA
Isotype	IgG
Storage Instruction	Store at -20°C on receipt and minimise freeze-thaw cycles.

### TARGET INFORMATION

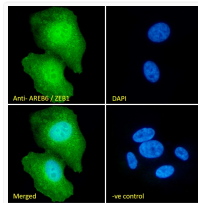
Gene ID	<a href="#">6935</a>
Gene Symbol	<a href="#">ZEB1</a>
UniProt ID	<a href="#">ZEB1_HUMAN</a>
Immunogen Region	Internal
Immunogen Sequence	RPQIRQKIENKPLQE
Specificity	This antibody is expected to recognize both reported isoforms (NP_001121600.1; NP_110378.3).

### ADDITIONAL INFORMATION

Note STRICTLY FOR FURTHER SCIENTIFIC RESEARCH USE ONLY (RUO). MUST NOT TO BE USED IN DIAGNOSTIC OR THERAPEUTIC APPLICATIONS.



STJ71831 (0.05µg/ml) staining of Mouse Heart lysate (35µg protein in RIPA buffer). Detected by chemiluminescence.



STJ71831 Immunofluorescence analysis of paraformaldehyde fixed U2OS cells, permeabilized with 0.15% Triton. Primary incubation 1hr (10ug/ml) followed by Alexa Fluor 488 secondary antibody (2ug/ml), showing nuclear and cytoplasmic staining. The nuclear stain is DAPI (blue). Negative control: Unimmunized goat IgG (10ug/ml) followed by Alexa Fluor 488 secondary antibody (2ug/ml).