

Anti-CEP290 antibody (Internal) (STJ71812)

GENERAL INFORMATION

Product Type	Primary antibodies
Applications	Pep-ELISA/IHC/ICC
Host / Source	Goat
Reactivity	Human

PRODUCT PROPERTIES

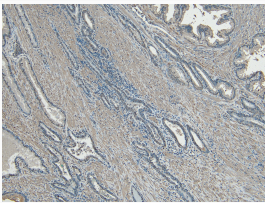
Clonality	Polyclonal
Concentration	0.5 mg/mL
Conjugation	Unconjugated
Purification	Purified from goat serum by ammonium sulphate precipitation followed by antigen affinity chromatography using the immunizing peptide.
Dilution Range	Peptide ELISA: antibody detection limit dilution 1:128000. IHC: Paraffin embedded Human Prostate. Recommended concentration: 5-7µg/ml. ICC: Formaldehyde-fixed cell lines derived from Prostate Cancer and from Breast Cancer show typical centros
Formulation	0.5 mg/ml in Tris saline, 0.02% sodium azide, pH7.3 with 0.5% bovine serum albumin. NA
Isotype	IgG
Storage Instruction	Store at -20°C on receipt and minimise freeze-thaw cycles.

TARGET INFORMATION

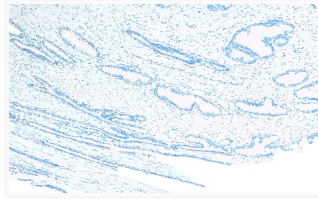
Gene ID	80184
Gene Symbol	CEP290
UniProt ID	CE290_HUMAN
Immunogen Region	Internal
Immunogen Sequence	RNSKHLKQQYRAEN
Specificity	Despite similarity of the immunizing peptide with the mouse protein, this antibody was demonstrated to weak for mouse Cep290.

ADDITIONAL INFORMATION

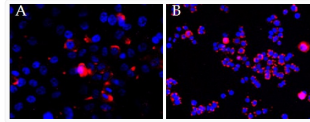
Note STRICTLY FOR FURTHER SCIENTIFIC RESEARCH USE ONLY (RUO). MUST NOT TO BE USED IN DIAGNOSTIC OR THERAPEUTIC APPLICATIONS.



STJ71812 (5µg/ml) staining of paraffin embedded Human Prostate. Heat induced antigen retrieval with citrate buffer pH 6, HRP-staining.



STJ71812 Negative Control showing staining of paraffin embedded Human Prostate, with no primary antibody.



STJ71812 (2.5µg/ml) overnight staining of cell lines OPCT-1 (A) and MDA468 (B) with Alexa Fluor 568 (red) and nuclear counter staining with DAPI (blue). Data kindly provided by Dr S, McArdle, and obtained by Sumanjeet Malhi, John van Geest Research Centre, Nottingham, UK