

Anti-GABRA4 antibody (Internal) (STJ71801)

GENERAL INFORMATION

Product Type	Primary antibodies
Applications	Pep-ELISA/WB/IHC
Host / Source	Goat
Reactivity	Human/Cow

PRODUCT PROPERTIES

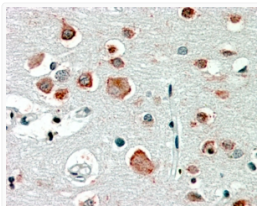
Clonality	Polyclonal
Concentration	0.5 mg/mL
Conjugation	Unconjugated
Purification	Purified from goat serum by ammonium sulphate precipitation followed by antigen affinity chromatography using the immunizing peptide.
Dilution Range	Peptide ELISA: antibody detection limit dilution 1:16000. WB: Approx. 70kDa band observed in Human Brain (Cerebellum and Frontal Cortex) lysates (calculated MW of 61.6kDa according to NP_000800.2). Recommended concentration: 0.1-0.3µg/ml. IHC
Formulation	0.5 mg/ml in Tris saline, 0.02% sodium azide, pH7.3 with 0.5% bovine serum albumin. NA
Isotype	IgG
Storage Instruction	Store at -20°C on receipt and minimise freeze-thaw cycles.

TARGET INFORMATION

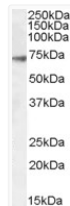
Gene ID	2557
Gene Symbol	GABRA4
UniProt ID	GBRA4_HUMAN
Immunogen Region	Internal
Immunogen Sequence	EKAKRKTSKPPQE

ADDITIONAL INFORMATION

Note STRICTLY FOR FURTHER SCIENTIFIC RESEARCH USE ONLY (RUO). MUST NOT TO BE USED IN DIAGNOSTIC OR THERAPEUTIC APPLICATIONS.



STJ71801 (2.5 µg/ml) staining of paraffin embedded Human Cortex. Steamed antigen retrieval with citrate buffer pH 6, AP-staining.



STJ71801 (0.1 µg/ml) staining of Human Frontal Cortex lysate (35 µg protein in RIPA buffer). Primary incubation was 1 hour. Detected by chemiluminescence.