

Anti-FTH1 antibody (C-Term) (STJ71797)

GENERAL INFORMATION

Product Type	Primary antibodies
Applications	Pep-ELISA/WB/IHC
Host / Source	Goat
Reactivity	Human

PRODUCT PROPERTIES

Clonality	Polyclonal
Concentration	0.5 mg/mL
Conjugation	Unconjugated
Purification	Purified from goat serum by ammonium sulphate precipitation followed by antigen affinity chromatography using the immunizing peptide.
Dilution Range	Peptide ELISA: antibody detection limit dilution 1:2000. WB: Approx 20kDa band observed in Human Placenta lysates (calculated MW of 21.2kDa according to NP_002023.2). Recommended concentration: 0.3-1µg/ml. Primary incubation was 1 hour. IHC:
Formulation	0.5 mg/ml in Tris saline, 0.02% sodium azide, pH7.3 with 0.5% bovine serum albumin. NA
Isotype	IgG
Storage Instruction	Store at -20°C on receipt and minimise freeze-thaw cycles.

TARGET INFORMATION

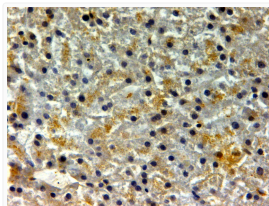
Gene ID	2495
Gene Symbol	FTH1
UniProt ID	FRIH_HUMAN
Immunogen Region	C-Term
Immunogen Sequence	DKHTLGSDSNES

ADDITIONAL INFORMATION

Note STRICTLY FOR FURTHER SCIENTIFIC RESEARCH USE ONLY (RUO). MUST NOT TO BE USED IN DIAGNOSTIC OR THERAPEUTIC APPLICATIONS.



STJ71797 (1µg/ml) staining of Human Placenta lysate (35µg protein in RIPA buffer). Detected by chemiluminescence.



STJ71797 (2µg/ml) staining of paraffin embedded Human Liver. Steamed antigen retrieval with citrate buffer pH 6, HRP-staining.