

Anti-KRT13 antibody (C-Term) (STJ71779)

GENERAL INFORMATION

Product Type	Primary antibodies
Applications	Pep-ELISA/WB/IHC
Host / Source	Goat
Reactivity	Human

PRODUCT PROPERTIES

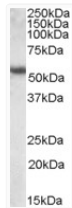
Clonality	Polyclonal
Concentration	0.5 mg/mL
Conjugation	Unconjugated
Purification	Purified from goat serum by ammonium sulphate precipitation followed by antigen affinity chromatography using the immunizing peptide.
Dilution Range	Peptide ELISA: antibody detection limit dilution 1:128000. WB: Approx. 55kDa band observed in Human Lung, Skeletal Muscle and Skin lysates (calculated MW of 49.6kDa according to NP_705694.2). The observed molecular weight corresponds to earlier f
Formulation	0.5 mg/ml in Tris saline, 0.02% sodium azide, pH7.3 with 0.5% bovine serum albumin. NA
Isotype	IgG
Storage Instruction	Store at -20°C on receipt and minimise freeze-thaw cycles.

TARGET INFORMATION

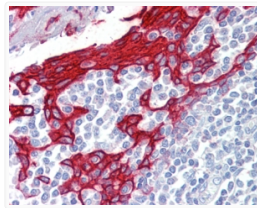
Gene ID	3860
Gene Symbol	KRT13
UniProt ID	K1C13_HUMAN
Immunogen Region	C-Term
Immunogen Sequence	TSNASGRRTSDVRRP
Specificity	This antibody is expected to recognize the reported isoform a (NP_002265.2) only.

ADDITIONAL INFORMATION

Note STRICTLY FOR FURTHER SCIENTIFIC RESEARCH USE ONLY (RUO). MUST NOT TO BE USED IN DIAGNOSTIC OR THERAPEUTIC APPLICATIONS.



STJ71779 (0.1 µg/ml) staining of Human Lung lysate (35 µg protein in RIPA buffer). Primary incubation was 1 hour. Detected by chemiluminescence.



STJ71779 (2.5 µg/ml) staining of paraffin embedded Human Tonsil. Steamed antigen retrieval with citrate buffer pH 6, AP-staining.