

Anti-SODD antibody (Internal) (STJ71776)

GENERAL INFORMATION

Product Type	Primary antibodies
Applications	Pep-ELISA/WB/IHC
Host / Source	Goat
Reactivity	Human

PRODUCT PROPERTIES

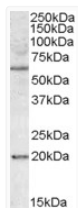
Clonality	Polyclonal
Concentration	0.5 mg/mL
Conjugation	Unconjugated
Purification	Purified from goat serum by ammonium sulphate precipitation followed by antigen affinity chromatography using the immunizing peptide.
Dilution Range	Peptide ELISA: antibody detection limit dilution 1:8000. WB: Approx. 60kDa band observed in cell lines HEK293 and HeLa lysates (calculated MW of 49.6kDa according to NP_004865.1). The observed molecular weight corresponds to earlier findings in I
Formulation	0.5 mg/ml in Tris saline, 0.02% sodium azide, pH7.3 with 0.5% bovine serum albumin. NA
Isotype	IgG
Storage Instruction	Store at -20°C on receipt and minimise freeze-thaw cycles.

TARGET INFORMATION

Gene ID	9530
Gene Symbol	BAG4
UniProt ID	BAG4_HUMAN
Immunogen Region	Internal
Immunogen Sequence	GNATSDHPNNQDQSS

ADDITIONAL INFORMATION

Note STRICTLY FOR FURTHER SCIENTIFIC RESEARCH USE ONLY (RUO). MUST NOT TO BE USED IN DIAGNOSTIC OR THERAPEUTIC APPLICATIONS.



STJ71776 (1 µg/ml) staining of HEK293 lysate (35 µg protein in RIPA buffer). Detected by chemiluminescence.