

## Anti-ERP29 antibody (C-Term) (STJ71752)

### GENERAL INFORMATION

Product Type	Primary antibodies
Applications	Pep-ELISA/WB/IF
Host / Source	Goat
Reactivity	Human/Rat/Dog/Pig/Cow

### PRODUCT PROPERTIES

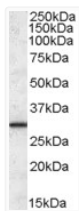
Clonality	Polyclonal
Concentration	0.5 mg/mL
Conjugation	Unconjugated
Purification	Purified from goat serum by ammonium sulphate precipitation followed by antigen affinity chromatography using the immunizing peptide.
Dilution Range	Peptide ELISA: antibody detection limit dilution 1:2000. WB: Approx. 28kDa band observed in Human Liver lysates (calculated MW of 29.0kDa according to NP_006808.1). Recommended concentration: 0.1-0.3µg/ml. Primary incubation was 1 hour. This prod
Formulation	0.5 mg/ml in Tris saline, 0.02% sodium azide, pH7.3 with 0.5% bovine serum albumin. NA
Isotype	IgG
Storage Instruction	Store at -20°C on receipt and minimise freeze-thaw cycles.

### TARGET INFORMATION

Gene ID	<a href="#">10961</a>
Gene Symbol	<a href="#">ERP29</a>
UniProt ID	<a href="#">ERP29_HUMAN</a>
Immunogen Region	C-Term
Immunogen Sequence	EKNKMSDGGKKEELQ
Specificity	This antibody is expected to recognize isoform 1 (NP_006808.1) only.

### ADDITIONAL INFORMATION

Note STRICTLY FOR FURTHER SCIENTIFIC RESEARCH USE ONLY (RUO). MUST NOT TO BE USED IN DIAGNOSTIC OR THERAPEUTIC APPLICATIONS.



STJ71752 (0.1 µg/ml) staining of Human Liver lysate (35 µg protein in RIPA buffer). Detected by chemiluminescence.