

Anti-COG1 antibody (Internal) (STJ71744)

GENERAL INFORMATION

Product Type	Primary antibodies
Applications	Pep-ELISA/WB/IF
Host / Source	Goat
Reactivity	Human

PRODUCT PROPERTIES

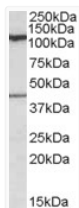
Clonality	Polyclonal
Concentration	0.5 mg/mL
Conjugation	Unconjugated
Purification	Purified from goat serum by ammonium sulphate precipitation followed by antigen affinity chromatography using the immunizing peptide.
Dilution Range	Peptide ELISA: antibody detection limit dilution 1:64000. WB: Approx. 110kDa band observed in Human Brain (Cerebellum, Amygdala) lysates (calculated MW of 109kDa according to NP_061184.1). Recommended concentration: 0.1-0.3µg/ml. An additional ba
Formulation	0.5 mg/ml in Tris saline, 0.02% sodium azide, pH7.3 with 0.5% bovine serum albumin. NA
Isotype	IgG
Storage Instruction	Store at -20°C on receipt and minimise freeze-thaw cycles.

TARGET INFORMATION

Gene ID	9382
Gene Symbol	COG1
UniProt ID	COG1_HUMAN
Immunogen Region	Internal
Immunogen Sequence	KAKSTRNIETKAQ

ADDITIONAL INFORMATION

Note STRICTLY FOR FURTHER SCIENTIFIC RESEARCH USE ONLY (RUO). MUST NOT TO BE USED IN DIAGNOSTIC OR THERAPEUTIC APPLICATIONS.



STJ71744 (0.1 µg/ml) staining of Human Cerebellum lysate (35 µg protein in RIPA buffer). Detected by chemiluminescence.