

## Anti-HOXD10 antibody (Internal) (STJ71706)

### GENERAL INFORMATION

Product Type	Primary antibodies
Applications	Pep-ELISA/IHC/FC
Host / Source	Goat
Reactivity	Human/Mouse/Rat/Horse/Cow

### PRODUCT PROPERTIES

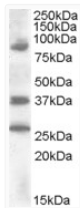
Clonality	Polyclonal
Concentration	0.5 mg/mL
Conjugation	Unconjugated
Purification	Purified from goat serum by ammonium sulphate precipitation followed by antigen affinity chromatography using the immunizing peptide.
Dilution Range	Peptide ELISA: antibody detection limit dilution 1:32000. WB: Preliminary testing showed a band at approx 37kDa in Human Kidney lysate after 3µg/ml antibody staining (calculated MW of 38.4 kDa according to NP_002139.2). Primary incubation 1 hour
Formulation	0.5 mg/ml in Tris saline, 0.02% sodium azide, pH7.3 with 0.5% bovine serum albumin. NA
Isotype	IgG
Storage Instruction	Store at -20°C on receipt and minimise freeze-thaw cycles.

### TARGET INFORMATION

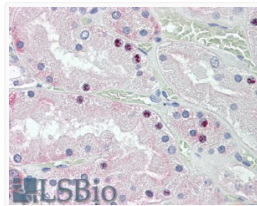
Gene ID	<a href="#">3236</a>
Gene Symbol	<a href="#">HOXD10</a>
UniProt ID	<a href="#">HXD10_HUMAN</a>
Immunogen Region	Internal
Immunogen Sequence	PNRSCRIEQPVTQQ

### ADDITIONAL INFORMATION

Note STRICTLY FOR FURTHER SCIENTIFIC RESEARCH USE ONLY (RUO). MUST NOT TO BE USED IN DIAGNOSTIC OR THERAPEUTIC APPLICATIONS.



STJ71706 (0.2 µg/ml) staining of Human Kidney lysate (35 µg protein in RIPA buffer). Primary incubation was 1 hour. Detected by chemiluminescence.



STJ71706 (3.8 µg/ml) staining of paraffin embedded Human Kidney. Steamed antigen retrieval with citrate buffer pH 6, AP-staining.