

Anti-CMA1 antibody (Internal) (STJ71703)

GENERAL INFORMATION

Product Type	Primary antibodies
Applications	Pep-ELISA/WB-Trf/IHC
Host / Source	Goat
Reactivity	Human

PRODUCT PROPERTIES

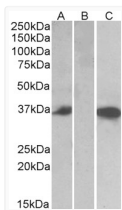
Clonality	Polyclonal
Concentration	0.5 mg/mL
Conjugation	Unconjugated
Purification	Purified from goat serum by ammonium sulphate precipitation followed by antigen affinity chromatography using the immunizing peptide.
Dilution Range	Peptide ELISA: antibody detection limit dilution 1:128000. WB: In transfected HEK293 transiently expressing full-length Human CMA1 (myc and DYKDDDDK tagged) , a band of approx. 35kDa was observed. No bands were observed in mock-transfected HEK293
Formulation	0.5 mg/ml in Tris saline, 0.02% sodium azide, pH7.3 with 0.5% bovine serum albumin. NA
Isotype	IgG
Storage Instruction	Store at -20°C on receipt and minimise freeze-thaw cycles.

TARGET INFORMATION

Gene ID	1215
Gene Symbol	CMA1
UniProt ID	CMA1_HUMAN
Immunogen Region	Internal
Immunogen Sequence	QFRHPKYNTSTLHHD

ADDITIONAL INFORMATION

Note STRICTLY FOR FURTHER SCIENTIFIC RESEARCH USE ONLY (RUO). MUST NOT TO BE USED IN DIAGNOSTIC OR THERAPEUTIC APPLICATIONS.



HEK293 lysate (10ug protein in RIPA buffer) over expressing Human CMA1 with DYKDDDDK tag probed with STJ71703 (0.5ug/ml) in Lane A and probed with anti-DYKDDDDK Tag (1/3000) in lane C. Mock-transfected HEK293 probed with STJ71703 (1mg/ml) in Lane B. Primary incubations were for 1 hour. Detected by chemiluminescence.