

Anti-CDH23/USH1D antibody (Internal) (STJ71691)

GENERAL INFORMATION

Product Type	Primary antibodies
Applications	Pep-ELISA/WB
Host / Source	Goat
Reactivity	Human

PRODUCT PROPERTIES

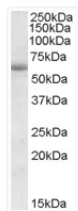
Clonality	Polyclonal
Concentration	0.5 mg/mL
Conjugation	Unconjugated
Purification	Purified from goat serum by ammonium sulphate precipitation followed by antigen affinity chromatography using the immunizing peptide.
Dilution Range	Peptide ELISA: antibody detection limit dilution 1:1000. WB: Approx 60kDa band observed in Human Brain (Amygdala and Frontal Cortex lysates (calculated MW of 58.6kDa according to NP_443068.1). Recommended concentration: 1-3µg/ml.
Formulation	0.5 mg/ml in Tris saline, 0.02% sodium azide, pH7.3 with 0.5% bovine serum albumin. NA
Isotype	IgG
Storage Instruction	Store at -20°C on receipt and minimise freeze-thaw cycles.

TARGET INFORMATION

Gene ID	64072
Gene Symbol	CDH23
UniProt ID	CAD23_HUMAN
Immunogen Region	Internal
Immunogen Sequence	YNISLYENVTVGTS
Specificity	This antibody is expected to recognize both reported isoforms (NP_071407.3; NP_443068.1).

ADDITIONAL INFORMATION

Note STRICTLY FOR FURTHER SCIENTIFIC RESEARCH USE ONLY (RUO). MUST NOT TO BE USED IN DIAGNOSTIC OR THERAPEUTIC APPLICATIONS.



STJ71691 (1µg/ml) staining of Human Amygdala lysate (35µg protein in RIPA buffer). Primary incubation was 1 hour. Detected by chemiluminescence.