

Anti-Slc10a2-Mouse antibody (C-Term) (STJ71675)

GENERAL INFORMATION

Product Type	Primary antibodies
Applications	Pep-ELISA/WB
Host / Source	Goat
Reactivity	Mouse

PRODUCT PROPERTIES

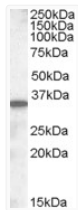
Clonality	Polyclonal
Concentration	0.5 mg/mL
Conjugation	Unconjugated
Purification	Purified from goat serum by ammonium sulphate precipitation followed by antigen affinity chromatography using the immunizing peptide.
Dilution Range	Peptide ELISA: antibody detection limit dilution 1:8000. WB: Approx. 35kDa band observed in Mouse Liver lysates (calculated MW of 38.1kDa according to NP_035518.1). Recommended concentration: 0.1-0.3µg/ml. Primary incubation 1 hour at room temper
Formulation	0.5 mg/ml in Tris saline, 0.02% sodium azide, pH7.3 with 0.5% bovine serum albumin. NA
Isotype	IgG
Storage Instruction	Store at -20°C on receipt and minimise freeze-thaw cycles.

TARGET INFORMATION

Immunogen Region	C-Term
Immunogen Sequence	DETNRKGFQPDEK

ADDITIONAL INFORMATION

Note STRICTLY FOR FURTHER SCIENTIFIC RESEARCH USE ONLY (RUO). MUST NOT TO BE USED IN DIAGNOSTIC OR THERAPEUTIC APPLICATIONS.



STJ71675 (0.5 µg/ml) staining of Mouse Small Intestine lysate (35 µg protein in RIPA buffer). Primary incubation was 1 hour. Detected by chemiluminescence.