

Anti-BIN1 antibody (Internal) (STJ71638)

GENERAL INFORMATION

Product Type	Primary antibodies
Applications	Pep-ELISA/WB
Host / Source	Goat
Reactivity	Human/Mouse/Rat/Dog/Pig/Cow

PRODUCT PROPERTIES

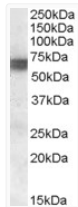
Clonality	Polyclonal
Concentration	0.5 mg/mL
Conjugation	Unconjugated
Purification	Purified from goat serum by ammonium sulphate precipitation followed by antigen affinity chromatography using the immunizing peptide.
Dilution Range	Peptide ELISA: antibody detection limit dilution 1:1000. WB: Experiments gave bands at approx 70kDa and 60kDa in Human Skeletal Muscle lysates after 0.1µg/ml antibody staining. These bands correspond to earlier findings in literature with differe
Formulation	0.5 mg/ml in Tris saline, 0.02% sodium azide, pH7.3 with 0.5% bovine serum albumin. NA
Isotype	IgG
Storage Instruction	Store at -20°C on receipt and minimise freeze-thaw cycles.

TARGET INFORMATION

Gene ID	274
Gene Symbol	BIN1
UniProt ID	BIN1_HUMAN
Immunogen Region	Internal
Immunogen Sequence	SDNAPAKGNKSPS
Specificity	This antibody is expected to recognise all ten reported isoforms (NP_647593.1, NP_647594.1, NP_647595.1, NP_647596.1, NP_647597.1, NP_647598.1, NP_647599.1, NP_004296.1, NP_647600.1, NP_647601.1).

ADDITIONAL INFORMATION

Note STRICTLY FOR FURTHER SCIENTIFIC RESEARCH USE ONLY (RUO). MUST NOT TO BE USED IN DIAGNOSTIC OR THERAPEUTIC APPLICATIONS.



STJ71638 (0.1 µg/ml) staining of Human Skeletal Muscle lysate (35 µg protein in RIPA buffer). Primary incubation was 1 hour. Detected by chemiluminescence