

## Anti-ABCD3 antibody (Internal) (STJ71633)

### GENERAL INFORMATION

Product Type	Primary antibodies
Applications	Pep-ELISA/FC/IHC
Host / Source	Goat
Reactivity	Human/Mouse/Rat

### PRODUCT PROPERTIES

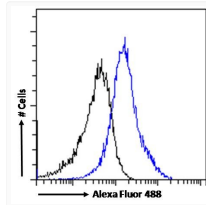
Clonality	Polyclonal
Concentration	0.5 mg/mL
Conjugation	Unconjugated
Purification	Purified from goat serum by ammonium sulphate precipitation followed by antigen affinity chromatography using the immunizing peptide.
Dilution Range	Peptide ELISA: antibody detection limit dilution 1:16000. IHC: In paraffin embedded Human Testis shows vesicular staining in Sertoli cells. Recommended concentration: 2.5-3.8µg/ml. FC: Flow cytometric analysis of A431 cells. Recommended concen
Formulation	0.5 mg/ml in Tris saline, 0.02% sodium azide, pH7.3 with 0.5% bovine serum albumin. NA
Isotype	IgG
Storage Instruction	Store at -20°C on receipt and minimise freeze-thaw cycles.

### TARGET INFORMATION

Gene ID	<a href="#">5825</a>
Gene Symbol	<a href="#">ABCD3</a>
UniProt ID	<a href="#">ABCD3_HUMAN</a>
Immunogen Region	Internal
Immunogen Sequence	PDGREDQKRKGISD
Specificity	This antibody is expected to recognize one isoform (NP_002849.1) only.

### ADDITIONAL INFORMATION

Note STRICTLY FOR FURTHER SCIENTIFIC RESEARCH USE ONLY (RUO). MUST NOT TO BE USED IN DIAGNOSTIC OR THERAPEUTIC APPLICATIONS.



STJ71633 Flow cytometric analysis of paraformaldehyde fixed A431 cells (blue line), permeabilized with 0.5% Triton. Primary incubation 1hr (10µg/ml) followed by Alexa Fluor 488 secondary antibody (1µg/ml). IgG control: Unimmunized goat IgG (black line) followed by Alexa Fluor 488 secondary antibody.