

Anti-PHF11 antibody (Internal) (STJ71592)

GENERAL INFORMATION

Product Type	Primary antibodies
Applications	Pep-ELISA/WB
Host / Source	Goat
Reactivity	Human

PRODUCT PROPERTIES

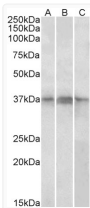
Clonality	Polyclonal
Concentration	0.5 mg/mL
Conjugation	Unconjugated
Purification	Purified from goat serum by ammonium sulphate precipitation followed by antigen affinity chromatography using the immunizing peptide.
Dilution Range	Peptide ELISA: antibody detection limit dilution 1:16000. WB: Approx 37kDa band observed in nuclear lysates of cell lines Daudi, Jurkat and Jurkat (calculated MW of 37.6kDa according to NP_001035533.1). Recommended concentration: 1-3µg/ml.
Formulation	0.5 mg/ml in Tris saline, 0.02% sodium azide, pH7.3 with 0.5% bovine serum albumin. NA
Isotype	IgG
Storage Instruction	Store at -20°C on receipt and minimise freeze-thaw cycles.

TARGET INFORMATION

Gene ID	51131
Gene Symbol	PHF11
UniProt ID	PHF11_HUMAN
Immunogen Region	Internal
Immunogen Sequence	KIHASQQRWQQLKE
Specificity	This antibody is expected to recognize both reported isoforms (NP_001035533.1; NP_001035534.1).

ADDITIONAL INFORMATION

Note STRICTLY FOR FURTHER SCIENTIFIC RESEARCH USE ONLY (RUO). MUST NOT TO BE USED IN DIAGNOSTIC OR THERAPEUTIC APPLICATIONS.



STJ71592 (1µg/ml) staining of Daudi, (A) Jurkat (B) and Jurkat nuclear (C) lysates (35µg protein in RIPA buffer). Primary incubation was 1 hour. Detected by chemiluminescence