

Anti-XBP1/TREB5 antibody (Internal) (STJ71580)

GENERAL INFORMATION

Product Type	Primary antibodies
Applications	Pep-ELISA/WB/IF/IHC
Host / Source	Goat
Reactivity	Human/Mouse/Rat/Dog

PRODUCT PROPERTIES

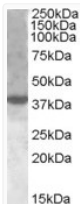
Clonality	Polyclonal
Concentration	0.5 mg/mL
Conjugation	Unconjugated
Purification	Purified from goat serum by ammonium sulphate precipitation followed by antigen affinity chromatography using the immunizing peptide.
Dilution Range	Peptide ELISA: antibody detection limit dilution 1:4000. WB: Approx 38kDa band observed in Nuclear lysates of cell line HeLa (calculated MW of 40.1kDa according to NP_001073007.1). Recommended concentration: 1-3µg/ml. Primary incubation 1 hour.at
Formulation	0.5 mg/ml in Tris saline, 0.02% sodium azide, pH7.3 with 0.5% bovine serum albumin. NA
Isotype	IgG
Storage Instruction	Store at -20°C on receipt and minimise freeze-thaw cycles.

TARGET INFORMATION

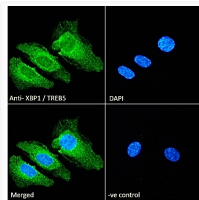
Gene ID	7494
Gene Symbol	XBP1
UniProt ID	XBP1_HUMAN
Immunogen Region	Internal
Immunogen Sequence	NHSWEDTFANELFPQ
Specificity	This antibody is expected to recognise isoform XBP1 (S) (NP_001073007.1) only, The epitope for EB08557 is aa358-372.

ADDITIONAL INFORMATION

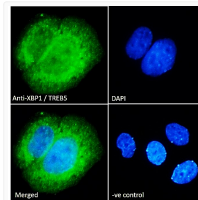
Note STRICTLY FOR FURTHER SCIENTIFIC RESEARCH USE ONLY (RUO). MUST NOT TO BE USED IN DIAGNOSTIC OR THERAPEUTIC APPLICATIONS.



STJ71580 (1µg/ml) staining of nuclear HeLa lysate (35µg protein in RIPA buffer). Detected by chemiluminescence.



STJ71580 Immunofluorescence analysis of paraformaldehyde fixed HeLa cells, permeabilized with 0.15% Triton. Primary incubation 1hr (10ug/ml) followed by Alexa Fluor 488 secondary antibody (2ug/ml), showing ER, cytoplasmic and nuclear staining. The nuclear stain is DAPI (blue). Negative control: Unimmunized goat IgG (10ug/ml) followed by Alexa Fluor 488 secondary antibody (2ug/ml).



STJ71580 Immunofluorescence analysis of paraformaldehyde fixed MCF7 cells, permeabilized with 0.15% Triton. Primary incubation 1hr (10ug/ml) followed by Alexa Fluor 488 secondary antibody (2ug/ml), showing ER, cytoplasmic and nuclear staining. The nuclear stain is DAPI (blue). Negative control: Unimmunized goat IgG (10ug/ml) followed by Alexa Fluor 488 secondary antibody (2ug/ml).