

## Anti-CLEC2/CLEC1B antibody (Internal) (STJ71575)

### GENERAL INFORMATION

Product Type	Primary antibodies
Applications	Pep-ELISA/WB
Host / Source	Goat
Reactivity	Human

### PRODUCT PROPERTIES

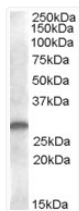
Clonality	Polyclonal
Concentration	0.5 mg/mL
Conjugation	Unconjugated
Purification	Purified from goat serum by ammonium sulphate precipitation followed by antigen affinity chromatography using the immunizing peptide.
Dilution Range	Peptide ELISA: antibody detection limit dilution 1:1000. WB: Approx 28kDa band observed in human bone marrow and human kidney lysates (calculated MW of 26.6kDa according to NP_001092901.1). Recommended concentration: 1-3µg/ml.
Formulation	0.5 mg/ml in Tris saline, 0.02% sodium azide, pH7.3 with 0.5% bovine serum albumin. NA
Isotype	IgG
Storage Instruction	Store at -20°C on receipt and minimise freeze-thaw cycles.

### TARGET INFORMATION

Gene ID	<a href="#">51266</a>
Gene Symbol	<a href="#">CLEC1B</a>
UniProt ID	<a href="#">CLC1B_HUMAN</a>
Immunogen Region	Internal
Immunogen Sequence	KGHKCSPCDTNWRY
Specificity	This antibody is expected to recognize both reported isoforms (NP_001092901.1; NP_057593.3)

### ADDITIONAL INFORMATION

Note STRICTLY FOR FURTHER SCIENTIFIC RESEARCH USE ONLY (RUO). MUST NOT TO BE USED IN DIAGNOSTIC OR THERAPEUTIC APPLICATIONS.



STJ71575 (1µg/ml) staining of human kidney lysate (35µg protein in RIPA buffer). Primary incubation was 1 hour. Detected by chemiluminescence.