

## Anti-Dual oxidase 1 antibody (Internal) (STJ71559)

### GENERAL INFORMATION

Product Type	Primary antibodies
Applications	Pep-ELISA/IHC
Host / Source	Goat
Reactivity	Human

### PRODUCT PROPERTIES

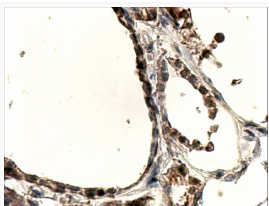
Clonality	Polyclonal
Conjugation	Unconjugated
Purification	Purified from goat serum by ammonium sulphate precipitation followed by antigen affinity chromatography using the immunizing peptide.
Dilution Range	Peptide ELISA: antibody detection limit dilution 1:32000. WB: Preliminary experiments in Human Placenta and Thyroid Gland lysates gave no specific signal but low background (at antibody concentration up to 0.5µg/ml). We would appreciate any feedb
Formulation	0.5 mg/ml in Tris saline, 0.02% sodium azide, pH7.3 with 0.5% bovine serum albumin. NA
Isotype	IgG
Storage Instruction	Store at -20°C on receipt and minimise freeze-thaw cycles.

### TARGET INFORMATION

Gene ID	<a href="#">53905</a>
Gene Symbol	<a href="#">DUOX1</a>
UniProt ID	<a href="#">DUOX1_HUMAN</a>
Immunogen Region	Internal
Immunogen Sequence	EKFQRSCLHQTVQ
Specificity	This antibody is expected to recognise both reported isoforms (NP_059130.2 ; NP_787954.1) which are identical;Concentration=0.5 mg/mL"

### ADDITIONAL INFORMATION

Note STRICTLY FOR FURTHER SCIENTIFIC RESEARCH USE ONLY (RUO). MUST NOT TO BE USED IN DIAGNOSTIC OR THERAPEUTIC APPLICATIONS.



STJ71559 (4µg/ml) staining of paraffin embedded Human Thyroid Gland. Steamed antigen retrieval with Tris/EDTA buffer pH 9, HRP-staining.