

Anti-TRPV5 antibody (Internal) (STJ71557)

GENERAL INFORMATION

Product Type	Primary antibodies
Applications	Pep-ELISA/WB/ICC/IF
Host / Source	Goat
Reactivity	Human/Mouse/Rat/Dog/Pig/Cow

PRODUCT PROPERTIES

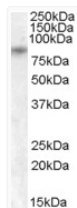
Clonality	Polyclonal
Concentration	0.5 mg/mL
Conjugation	Unconjugated
Purification	Purified from goat serum by ammonium sulphate precipitation followed by antigen affinity chromatography using the immunizing peptide.
Dilution Range	Peptide ELISA: antibody detection limit dilution 1:16000. WB: Approx 85kDa band observed in Human Pancreas lysates (calculated MW of 82.6kDa according to NP_062815.2). Recommended concentration: 1-3µg/ml. Primary incubation was 1 hour. This antib
Formulation	0.5 mg/ml in Tris saline, 0.02% sodium azide, pH7.3 with 0.5% bovine serum albumin. NA
Isotype	IgG
Storage Instruction	Store at -20°C on receipt and minimise freeze-thaw cycles.

TARGET INFORMATION

Gene ID	56302
Gene Symbol	TRPV5
UniProt ID	TRPV5_HUMAN
Immunogen Region	Internal
Immunogen Sequence	SHRGWEILRQNT

ADDITIONAL INFORMATION

Note STRICTLY FOR FURTHER SCIENTIFIC RESEARCH USE ONLY (RUO). MUST NOT TO BE USED IN DIAGNOSTIC OR THERAPEUTIC APPLICATIONS.



STJ71557 (1µg/ml) staining of Human Pancreas lysate (35µg protein in RIPA buffer). Detected by chemiluminescence.