

Anti-FGFR2 antibody (Internal) (STJ71519)

GENERAL INFORMATION

Product Type	Primary antibodies
Applications	Pep-ELISA/WB
Host / Source	Goat
Reactivity	Human/Mouse/Rat/Dog/Pig/Cow

PRODUCT PROPERTIES

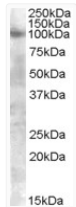
Clonality	Polyclonal
Concentration	0.5 mg/mL
Conjugation	Unconjugated
Purification	Purified from goat serum by ammonium sulphate precipitation followed by antigen affinity chromatography using the immunizing peptide.
Dilution Range	Peptide ELISA: antibody detection limit dilution 1:64000. WB: Approx 100kDa band observed in Human lysates of cell line A549 (calculated MW of 92.0kDa according to NP_000132.1 and of 92.1kDa according to NP_075259.2). Recommended concentration: 0
Formulation	0.5 mg/ml in Tris saline, 0.02% sodium azide, pH7.3 with 0.5% bovine serum albumin. NA
Isotype	IgG
Storage Instruction	Store at -20°C on receipt and minimise freeze-thaw cycles.

TARGET INFORMATION

Gene ID	2263
Gene Symbol	FGFR2
UniProt ID	FGFR2_HUMAN
Immunogen Region	Internal
Immunogen Sequence	GREKEITASPDY
Specificity	This antibody is expected to recognise all reported isoforms except isoform 7 (NP_001138389.1). The immunizing peptide represents part of the extracellular domain.

ADDITIONAL INFORMATION

Note STRICTLY FOR FURTHER SCIENTIFIC RESEARCH USE ONLY (RUO). MUST NOT TO BE USED IN DIAGNOSTIC OR THERAPEUTIC APPLICATIONS.



STJ71519 (0.3 µg/ml) staining of A549 lysate (35 µg protein in RIPA buffer). Primary incubation was 1 hour. Detected by chemiluminescence.