

Anti-MC5R antibody (N-Term) (STJ71515)

GENERAL INFORMATION

Product Type	Primary antibodies
Applications	Pep-ELISA/WB/IHC
Host / Source	Goat
Reactivity	Human/Mouse

PRODUCT PROPERTIES

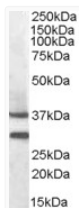
Clonality	Polyclonal
Concentration	0.5 mg/mL
Conjugation	Unconjugated
Purification	Purified from goat serum by ammonium sulphate precipitation followed by antigen affinity chromatography using the immunizing peptide.
Dilution Range	Peptide ELISA: antibody detection limit dilution 1:8000. WB: Approx. 37kDa band observed in Mouse Skeletal Muscle lysates (calculated MW of 36.6kDa according to NP_005904.1). Recommended concentration: 0.3-1µg/ml. Primary incubation 1 hour at room temperature.
Formulation	0.5 mg/ml in Tris saline, 0.02% sodium azide, pH7.3 with 0.5% bovine serum albumin. NA
Isotype	IgG
Storage Instruction	Store at -20°C on receipt and minimise freeze-thaw cycles.

TARGET INFORMATION

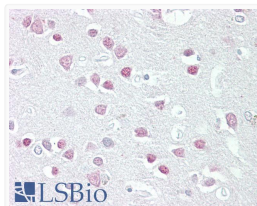
Gene ID	4161
Gene Symbol	MC5R
UniProt ID	MC5R_HUMAN
Immunogen Region	N-Term
Immunogen Sequence	PNVKNKSSPCED

ADDITIONAL INFORMATION

Note: STRICTLY FOR FURTHER SCIENTIFIC RESEARCH USE ONLY (RUO). MUST NOT TO BE USED IN DIAGNOSTIC OR THERAPEUTIC APPLICATIONS.



STJ71515 (0.3 µg/ml) staining of Mouse Muscle lysate (35 µg protein in RIPA buffer). Detected by chemiluminescence.



STJ71515 (2.5 µg/ml) staining of paraffin embedded Human Cortex. Steamed antigen retrieval with citrate buffer pH 6, AP-staining.