

Anti-Dachshund homolog 1 antibody (Internal) (STJ71512)

GENERAL INFORMATION

Product Type	Primary antibodies
Applications	Pep-ELISA/WB
Host / Source	Goat
Reactivity	Human/Mouse/Rat/Dog/Pig

PRODUCT PROPERTIES

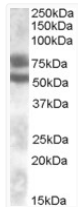
Clonality	Polyclonal
Concentration	0.5 mg/mL
Conjugation	Unconjugated
Purification	Purified from goat serum by ammonium sulphate precipitation followed by antigen affinity chromatography using the immunizing peptide.
Dilution Range	Peptide ELISA: antibody detection limit dilution 1:16000. WB: Approx 75 and 52kDa bands observed in Human Kidney lysates (calculated MW of 73.0kDa according to NP_542937.1 and of 51.9kDa according to NP_004383.2). Recommended concentration: 0.1-0
Formulation	0.5 mg/ml in Tris saline, 0.02% sodium azide, pH7.3 with 0.5% bovine serum albumin. NA
Isotype	IgG
Storage Instruction	Store at -20°C on receipt and minimise freeze-thaw cycles.

TARGET INFORMATION

Gene ID	1602
Gene Symbol	DACH1
UniProt ID	DACH1_HUMAN
Immunogen Region	Internal
Immunogen Sequence	SPVENTPQNNECK
Specificity	This antibody is expected to recognise all three reported isoforms (NP_542937.1; NP_542938.1; NP_004383.2).

ADDITIONAL INFORMATION

Note STRICTLY FOR FURTHER SCIENTIFIC RESEARCH USE ONLY (RUO). MUST NOT TO BE USED IN DIAGNOSTIC OR THERAPEUTIC APPLICATIONS.



STJ71512 (0.1 µg/ml) staining of Human Kidney lysate (35 µg protein in RIPA buffer). Primary incubation was 1 hour. Detected by chemiluminescence.