

## Anti-CEP290/NPHP6 antibody (Internal) (STJ71490)

### GENERAL INFORMATION

Product Type	Primary antibodies
Applications	Pep-ELISA/IHC/IF
Host / Source	Goat
Reactivity	Human

### PRODUCT PROPERTIES

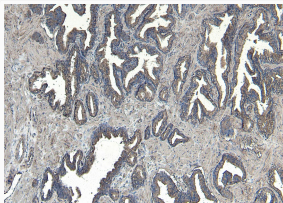
Clonality	Polyclonal
Concentration	0.5 mg/mL
Conjugation	Unconjugated
Purification	Purified from goat serum by ammonium sulphate precipitation followed by antigen affinity chromatography using the immunizing peptide.
Dilution Range	Peptide ELISA: antibody detection limit dilution 1:8000. IHC: Paraffin embedded Human Prostate. Recommended concentration: 4-8µg/ml. IF: Strong expression of the protein seen within the centrosome of HeLa cells. Recommended concentration: 10µ
Formulation	0.5 mg/ml in Tris saline, 0.02% sodium azide, pH7.3 with 0.5% bovine serum albumin. NA
Isotype	IgG
Storage Instruction	Store at -20°C on receipt and minimise freeze-thaw cycles.

### TARGET INFORMATION

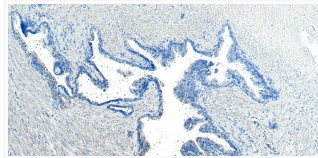
Gene ID	<a href="#">80184</a>
Gene Symbol	<a href="#">CEP290</a>
UniProt ID	<a href="#">CE290_HUMAN</a>
Immunogen Region	Internal
Immunogen Sequence	QSGAESTIPDADQ

### ADDITIONAL INFORMATION

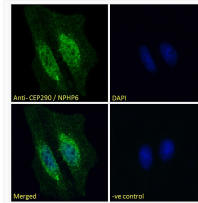
Note STRICTLY FOR FURTHER SCIENTIFIC RESEARCH USE ONLY (RUO). MUST NOT TO BE USED IN DIAGNOSTIC OR THERAPEUTIC APPLICATIONS.



STJ71490 (8µg/ml) staining of paraffin embedded Human Prostate. Heat induced antigen retrieval with citrate buffer pH 6, HRP-staining.



STJ71490 Negative Control showing staining of paraffin embedded Human Prostate, with no primary antibody.



STJ71490 Immunofluorescence analysis of paraformaldehyde fixed HeLa cells, permeabilized with 0.15% Triton. Primary incubation 1hr (10ug/ml) followed by Alexa Fluor 488 secondary antibody (2ug/ml), showing nuclear and centrosome staining. The nuclear stain is DAPI (blue). Negative control: Unimmunized goat IgG (10ug/ml) followed by Alexa Fluor 488 secondary antibody (2ug/ml).