

Anti-TUSC3/N33 antibody (Internal) (STJ71488)

GENERAL INFORMATION

Product Type	Primary antibodies
Applications	Pep-ELISA/WB/IHC
Host / Source	Goat
Reactivity	Human/Mouse/Rat/Cow

PRODUCT PROPERTIES

Clonality	Polyclonal
Concentration	0.5 mg/mL
Conjugation	Unconjugated
Purification	Purified from goat serum by ammonium sulphate precipitation followed by antigen affinity chromatography using the immunizing peptide.
Dilution Range	Peptide ELISA: antibody detection limit dilution 1:1000. WB: Approx 37kDa band observed in Human Liver and Lung lysates (calculated MW of 39.7kDa according to NP_006756.2 and of 39.6 according to NP_839952.1). An additional band of unknown identity
Formulation	0.5 mg/ml in Tris saline, 0.02% sodium azide, pH7.3 with 0.5% bovine serum albumin. NA
Isotype	IgG
Storage Instruction	Store at -20°C on receipt and minimise freeze-thaw cycles.

TARGET INFORMATION

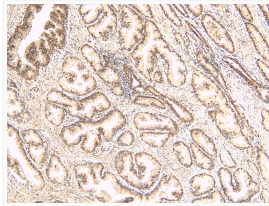
Gene ID	7991
Gene Symbol	TUSC3
UniProt ID	TUSC3_HUMAN
Immunogen Region	Internal
Immunogen Sequence	PQRQCSVCRQAN
Specificity	This antibody is expected to recognise both reported isoforms (NP_006756.2; NP_839952.1).

ADDITIONAL INFORMATION

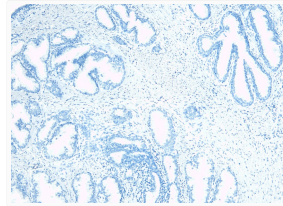
Note STRICTLY FOR FURTHER SCIENTIFIC RESEARCH USE ONLY (RUO). MUST NOT TO BE USED IN DIAGNOSTIC OR THERAPEUTIC APPLICATIONS.



STJ71488 (1µg/ml) staining of Human Liver lysate (35µg protein in RIPA buffer). Detected by chemiluminescence.



STJ71488 (8µg/ml) staining of paraffin embedded Human Prostate. Heat induced antigen retrieval with citrate buffer pH 6, HRP-staining.



STJ71488 Negative Control showing staining of paraffin embedded Human Prostate, with no primary antibody.