

Anti-ESRRG antibody (Internal) (STJ71481)

GENERAL INFORMATION

Product Type	Primary antibodies
Applications	Pep-ELISA/WB
Host / Source	Goat
Reactivity	Human/Mouse/Dog

PRODUCT PROPERTIES

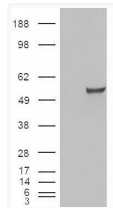
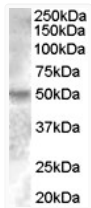
Clonality	Polyclonal
Concentration	0.5 mg/mL
Conjugation	Unconjugated
Purification	Purified from goat serum by ammonium sulphate precipitation followed by antigen affinity chromatography using the immunizing peptide.
Dilution Range	Peptide ELISA: antibody detection limit dilution 1:16000. WB: Approx. 50kDa band observed in Human Brain (Cerebellum) and Breast lysates (calculated MW of 51.3kDa according to NP_NP_001429.2). In transfected HEK293 transiently expressing ESRRG a
Formulation	0.5 mg/ml in Tris saline, 0.02% sodium azide, pH7.3 with 0.5% bovine serum albumin. NA
Isotype	IgG
Storage Instruction	Store at -20°C on receipt and minimise freeze-thaw cycles.

TARGET INFORMATION

Gene ID	2104
Gene Symbol	ESRRG
UniProt ID	ERR3_HUMAN
Immunogen Region	Internal
Immunogen Sequence	CRMSNKDRHIDS
Specificity	This antibody is expected to recognise the reported isoform NP_001429.2.

ADDITIONAL INFORMATION

Note STRICTLY FOR FURTHER SCIENTIFIC RESEARCH USE ONLY (RUO). MUST NOT TO BE USED IN DIAGNOSTIC OR THERAPEUTIC APPLICATIONS.



STJ71481 (0.2 µg/ml) staining of Human Breast lysate (35 µg protein in RIPA buffer). Primary incubation was 1 hour. Detected by chemiluminescence.

HEK293 overexpressing ESRRG (RC218233) probed with STJ71481 (mock transfection in first lane), tested by Origene.