

Anti-IGF2BP2 antibody (C-Term) (STJ71433)

GENERAL INFORMATION

Product Type	Primary antibodies
Applications	Pep-ELISA/WB
Host / Source	Goat
Reactivity	Human/Mouse/Dog

PRODUCT PROPERTIES

Clonality	Polyclonal
Concentration	0.5 mg/mL
Conjugation	Unconjugated
Purification	Purified from goat serum by ammonium sulphate precipitation followed by antigen affinity chromatography using the immunizing peptide.
Dilution Range	Peptide ELISA: antibody detection limit dilution 1:16000. WB: Approx. 60-70kDa band observed in lysates of cell line HepG2 (calculated MW of 66.1kDa according to NP_006539.3). In transfected HEK293 transiently expressing IGF2BP2 a band of approx.
Formulation	0.5 mg/ml in Tris saline, 0.02% sodium azide, pH7.3 with 0.5% bovine serum albumin. NA
Isotype	IgG
Storage Instruction	Store at -20°C on receipt and minimise freeze-thaw cycles.

TARGET INFORMATION

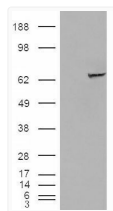
Gene ID	10644
Gene Symbol	IGF2BP2
UniProt ID	IF2B2_HUMAN
Immunogen Region	C-Term
Immunogen Sequence	KQQEQKYPQGVASQR
Specificity	This antibody is expected to recognise both reported isoforms (NP_006539.3 and NP_001007226.1).

ADDITIONAL INFORMATION

Note STRICTLY FOR FURTHER SCIENTIFIC RESEARCH USE ONLY (RUO). MUST NOT TO BE USED IN DIAGNOSTIC OR THERAPEUTIC APPLICATIONS.



STJ71433 (1µg/ml) staining of HepG2 cell lysate (35µg protein in RIPA buffer). Primary incubation was 1 hour. Detected by chemiluminescence.



HEK293 overexpressing IGF2BP2 (RC205673) and probed with STJ71433 (mock transfection in first lane), tested by Origene.