

Anti-PITX3 antibody (Internal) (STJ71431)

GENERAL INFORMATION

Product Type	Primary antibodies
Applications	Pep-ELISA/WB
Host / Source	Goat
Reactivity	Human

PRODUCT PROPERTIES

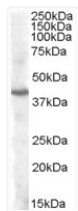
Clonality	Polyclonal
Concentration	0.5 mg/mL
Conjugation	Unconjugated
Purification	Purified from goat serum by ammonium sulphate precipitation followed by antigen affinity chromatography using the immunizing peptide.
Dilution Range	Peptide ELISA: antibody detection limit dilution 1:1000. WB: Approx 40kDa band observed in Human Brain (Cerebellum and Cerebral Cortex) lysates (calculated MW of 31.8kDa according to NP_005020.1). The observed molecular weight corresponds to earl
Formulation	0.5 mg/ml in Tris saline, 0.02% sodium azide, pH7.3 with 0.5% bovine serum albumin. NA
Isotype	IgG
Storage Instruction	Store at -20°C on receipt and minimise freeze-thaw cycles.

TARGET INFORMATION

Gene ID	5309
Gene Symbol	PITX3
UniProt ID	PITX3_HUMAN
Immunogen Region	Internal
Immunogen Sequence	PEHGCKGQEHSD
Specificity	This antibody is not expected to cross-react with PITX1 and PITX2.

ADDITIONAL INFORMATION

Note STRICTLY FOR FURTHER SCIENTIFIC RESEARCH USE ONLY (RUO). MUST NOT TO BE USED IN DIAGNOSTIC OR THERAPEUTIC APPLICATIONS.



STJ71431 (1µg/ml) staining of Human Cerebellum lysate (35µg protein in RIPA buffer). Primary incubation was 1 hour. Detected by chemiluminescence.