

## Anti-TMPRSS2 antibody (Internal) (STJ71393)

### GENERAL INFORMATION

Product Type	Primary antibodies
Applications	Pep-ELISA/WB/IHC
Host / Source	Goat
Reactivity	Human

### PRODUCT PROPERTIES

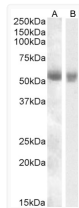
Clonality	Polyclonal
Concentration	0.5 mg/mL
Conjugation	Unconjugated
Purification	Purified from goat serum by ammonium sulphate precipitation followed by antigen affinity chromatography using the immunizing peptide.
Dilution Range	Peptide ELISA: antibody detection limit dilution 1:8000. WB: Approx 55-60kDa band observed in Human Pancreas and Kidney lysates (calculated MW of 53.9kDa according to NP_005647.2). This molecular weight is routinely observed by other sources. Rec
Formulation	0.5 mg/ml in Tris saline, 0.02% sodium azide, pH7.3 with 0.5% bovine serum albumin. NA
Isotype	IgG
Storage Instruction	Store at -20°C on receipt and minimise freeze-thaw cycles.

### TARGET INFORMATION

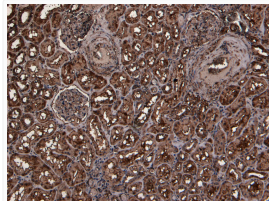
Gene ID	<a href="#">7113</a>
Gene Symbol	<a href="#">TMPRSS2</a>
UniProt ID	<a href="#">TMPS2_HUMAN</a>
Immunogen Region	Internal
Immunogen Sequence	TDWIYRQMRADG

### ADDITIONAL INFORMATION

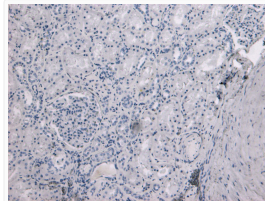
Note **STRICTLY FOR FURTHER SCIENTIFIC RESEARCH USE ONLY (RUO). MUST NOT TO BE USED IN DIAGNOSTIC OR THERAPEUTIC APPLICATIONS.**



STJ71393 (0.5 µg/ml) staining of Human Pancreas and Kidney Lysates (35 µg protein in RIPA buffer). Detected by chemiluminescence.



STJ71393 (8 µg/ml) staining of paraffin embedded Human Kidney. Heat induced antigen retrieval with citrate buffer pH 6, HRP-staining.



STJ71393 Negative Control showing staining of paraffin embedded Human Kidney, with no primary antibody.