

## Anti-LMO6 antibody (Internal) (STJ71388)

### GENERAL INFORMATION

|               |                    |
|---------------|--------------------|
| Product Type  | Primary antibodies |
| Applications  | Pep-ELISA/WB       |
| Host / Source | Goat               |
| Reactivity    | Human              |

### PRODUCT PROPERTIES

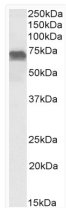
|                     |  |
|---------------------|--|
| Clonality           | Polyclonal   |
| Concentration       | 0.5 mg/mL  |
| Conjugation         | Unconjugated   |
| Purification        | Purified from goat serum by ammonium sulphate precipitation followed by antigen affinity chromatography using the immunizing peptide.  |
| Dilution Range      | Peptide ELISA: antibody detection limit dilution 1:128000.<br>WB: Approx 70kDa band observed in lysates of cell line Daudi (calculated MW of 68.6kDa according to NP_006141.2). Recommended concentration: 0.1-0.3µg/ml. |
| Formulation         | 0.5 mg/ml in Tris saline, 0.02% sodium azide, pH7.3 with 0.5% bovine serum albumin. NA   |
| Isotype             | IgG  |
| Storage Instruction | Store at -20°C on receipt and minimise freeze-thaw cycles.   |

### TARGET INFORMATION

|                    |                             |
|--------------------|-----------------------------|
| Gene ID            | <a href="#">4007</a>        |
| Gene Symbol        | <a href="#">PRICKLE3</a>    |
| UniProt ID         | <a href="#">PRIC3_HUMAN</a> |
| Immunogen Region   | Internal                    |
| Immunogen Sequence | HPSRRRHQCD                  |

### ADDITIONAL INFORMATION

Note STRICTLY FOR FURTHER SCIENTIFIC RESEARCH USE ONLY (RUO). MUST NOT TO BE USED IN DIAGNOSTIC OR THERAPEUTIC APPLICATIONS.



STJ71388 (0.1µg/ml) staining of Daudi lysate (35µg protein in RIPA buffer). Primary incubation was 1 hour. Detected by chemiluminescence.