

Anti-ABCB5 antibody (Internal) (STJ71387)

GENERAL INFORMATION

Product Type	Primary antibodies
Applications	Pep-ELISA/WB/FC
Host / Source	Goat
Reactivity	Human

PRODUCT PROPERTIES

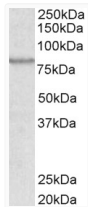
Clonality	Polyclonal
Concentration	0.5 mg/mL
Conjugation	Unconjugated
Purification	Purified from goat serum by ammonium sulphate precipitation followed by antigen affinity chromatography using the immunizing peptide.
Dilution Range	Peptide ELISA: antibody detection limit dilution 1:32000. WB: Approx 80kDa band observed in lysates of cell line A431 (calculated MW of 89.8kDa according to NP_848654.3). Recommended concentration: 0.3-1µg/ml. Primary incubation was 1 hour. F
Formulation	0.5 mg/ml in Tris saline, 0.02% sodium azide, pH7.3 with 0.5% bovine serum albumin. NA
Isotype	IgG
Storage Instruction	Store at -20°C on receipt and minimise freeze-thaw cycles.

TARGET INFORMATION

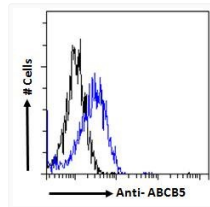
Gene ID	340273
Gene Symbol	ABCB5
UniProt ID	ABCB5_HUMAN
Immunogen Region	Internal
Immunogen Sequence	QTQHRNTSKKAQ
Specificity	This antibody is expected to recognise both reported isoforms (NP_848654.3; NP_001157413.1)

ADDITIONAL INFORMATION

Note STRICTLY FOR FURTHER SCIENTIFIC RESEARCH USE ONLY (RUO). MUST NOT TO BE USED IN DIAGNOSTIC OR THERAPEUTIC APPLICATIONS.



STJ71387 (0.3µg/ml) staining of lysates of cell line A431 (35µg protein in RIPA buffer). Detected by chemiluminescence.



Flow cytometric analysis of paraformaldehyde fixed HepG2 cells (blue line), permeabilized with 0.5% Triton. Primary incubation 1hr (10µg/ml) followed by Alexa Fluor 488 secondary antibody (1µg/ml). NA NA NA IgG control: Unimmunized goat IgG (black line) followed by Alexa Fluor 488 secondary antibody.