

Anti-PTGER3/EP3 antibody (C-Term) (STJ71384)

GENERAL INFORMATION

Product Type	Primary antibodies
Applications	Pep-ELISA/WB
Host / Source	Goat
Reactivity	Human

PRODUCT PROPERTIES

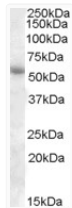
Clonality	Polyclonal
Concentration	0.5 mg/mL
Conjugation	Unconjugated
Purification	Purified from goat serum by ammonium sulphate precipitation followed by antigen affinity chromatography using the immunizing peptide.
Dilution Range	Peptide ELISA: antibody detection limit dilution 1:2000. WB: Approx 55kDa band observed in Human Adipose, Kidney, Pancreas and Placenta lysates (calculated MW of 47.3kDa according to NP_000948.2). The observed molecular weight corresponds to earl
Formulation	0.5 mg/ml in Tris saline, 0.02% sodium azide, pH7.3 with 0.5% bovine serum albumin. NA
Isotype	IgG
Storage Instruction	Store at -20°C on receipt and minimise freeze-thaw cycles.

TARGET INFORMATION

Gene ID	5733
Gene Symbol	PTGER3
UniProt ID	PE2R3_HUMAN
Immunogen Region	C-Term
Immunogen Sequence	KLLREPCSVQLS
Specificity	This antibody is expected to recognize isoforms 1, 2 and 3 (NP_000948.2, NP_942005.2 and NP_942006.1).

ADDITIONAL INFORMATION

Note STRICTLY FOR FURTHER SCIENTIFIC RESEARCH USE ONLY (RUO). MUST NOT TO BE USED IN DIAGNOSTIC OR THERAPEUTIC APPLICATIONS.



STJ71384 (1µg/ml) staining of Human Adipose lysate (35µg protein in RIPA buffer). Primary incubation was 1 hour. Detected by chemiluminescence.