

## Anti-ARNO/cytohesin 2 antibody (N-Term) (STJ71371)

### GENERAL INFORMATION

Product Type	Primary antibodies
Applications	Pep-ELISA/WB
Host / Source	Goat
Reactivity	Human/Mouse/Rat/Dog

### PRODUCT PROPERTIES

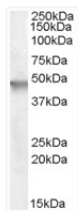
Clonality	Polyclonal
Concentration	0.5 mg/mL
Conjugation	Unconjugated
Purification	Purified from goat serum by ammonium sulphate precipitation followed by antigen affinity chromatography using the immunizing peptide.
Dilution Range	Peptide ELISA: antibody detection limit dilution 1:32000. WB: Approx 48kDa band observed in Human Brain (Cerebellum) lysates (calculated MW of 46.5kDa according to NP_004219.2 and NP_059431.1). Recommended concentration: 0.5-1.5µg/ml.
Formulation	0.5 mg/ml in Tris saline, 0.02% sodium azide, pH7.3 with 0.5% bovine serum albumin. NA
Isotype	IgG
Storage Instruction	Store at -20°C on receipt and minimise freeze-thaw cycles.

### TARGET INFORMATION

Gene ID	<a href="#">9266</a>
Gene Symbol	<a href="#">CYTH2</a>
UniProt ID	<a href="#">CYH2_HUMAN</a>
Immunogen Region	N-Term
Immunogen Sequence	EDGVYEPPDLTP
Specificity	This antibody is expected to recognise both reported isoforms (NP_004219.2; NP_059431.1).

### ADDITIONAL INFORMATION

Note STRICTLY FOR FURTHER SCIENTIFIC RESEARCH USE ONLY (RUO). MUST NOT TO BE USED IN DIAGNOSTIC OR THERAPEUTIC APPLICATIONS.



STJ71371 (0.5 µg/ml) staining of Human Brain (Cerebellum) lysate (35 µg protein in RIPA buffer). Primary incubation was 1 hour. Detected by chemiluminescence.