

Anti-PRRX1 antibody (Internal) (STJ71368)

GENERAL INFORMATION

Product Type	Primary antibodies
Applications	Pep-ELISA/WB
Host / Source	Goat
Reactivity	Human/Mouse/Cow

PRODUCT PROPERTIES

Clonality	Polyclonal
Concentration	0.5 mg/mL
Conjugation	Unconjugated
Purification	Purified from goat serum by ammonium sulphate precipitation followed by antigen affinity chromatography using the immunizing peptide.
Dilution Range	Peptide ELISA: antibody detection limit dilution 1:2000. WB: Approx 28kDa band observed in Mouse Heart lysates, and approx. 22-23kDa in lysates of cell line LNCaP (calculated MW of 24.4kDa according to Human NP_008833.1) and 27.3kDa according to
Formulation	0.5 mg/ml in Tris saline, 0.02% sodium azide, pH7.3 with 0.5% bovine serum albumin. NA
Isotype	IgG
Storage Instruction	Store at -20°C on receipt and minimise freeze-thaw cycles.

TARGET INFORMATION

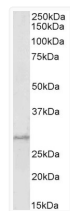
Gene ID	5396
Gene Symbol	PRRX1
UniProt ID	PRRX1_HUMAN
Immunogen Region	Internal
Immunogen Sequence	GSDTPQQDNDQ
Specificity	This antibody is expected to recognise both reported isoforms (NP_008833.1; NP_073207.1).

ADDITIONAL INFORMATION

Note **STRICTLY FOR FURTHER SCIENTIFIC RESEARCH USE ONLY (RUO). MUST NOT TO BE USED IN DIAGNOSTIC OR THERAPEUTIC APPLICATIONS.**



STJ71368 (2µg/ml) staining of LNCaP cell lysate (35µg protein in RIPA buffer). Detected by chemiluminescence.



STJ71368 (1µg/ml) staining of Mouse Heart lysate (35µg protein in RIPA buffer). Detected by chemiluminescence.