

## Anti-CRYAB antibody (Internal) (STJ71359)

### GENERAL INFORMATION

Product Type	Primary antibodies
Applications	Pep-ELISA/WB
Host / Source	Goat
Reactivity	Human/Mouse/Rat

### PRODUCT PROPERTIES

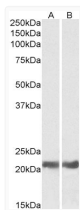
Clonality	Polyclonal
Concentration	0.5 mg/mL
Conjugation	Unconjugated
Purification	Purified from goat serum by ammonium sulphate precipitation followed by antigen affinity chromatography using the immunizing peptide.
Dilution Range	Peptide ELISA: antibody detection limit dilution 1:128000. WB: Approx 22kDa band observed in Mouse and Rat Eye lysates (calculated MW of 20.1kDa according to Mouse NP_034094.1 and Rat NP_037067.1). Recommended concentration: 0.03-0.1- $\mu$ g/ml.
Formulation	0.5 mg/ml in Tris saline, 0.02% sodium azide, pH7.3 with 0.5% bovine serum albumin. NA
Isotype	IgG
Storage Instruction	Store at -20°C on receipt and minimise freeze-thaw cycles.

### TARGET INFORMATION

Gene ID	<a href="#">1410</a>
Gene Symbol	<a href="#">CRYAB</a>
UniProt ID	<a href="#">CRYAB_HUMAN</a>
Immunogen Region	Internal
Immunogen Sequence	RLEKDRFSVNLD

### ADDITIONAL INFORMATION

Note STRICTLY FOR FURTHER SCIENTIFIC RESEARCH USE ONLY (RUO). MUST NOT TO BE USED IN DIAGNOSTIC OR THERAPEUTIC APPLICATIONS.



STJ71359 (0.05 $\mu$ g/ml) staining of Mouse (A) and Rat (B) Eye lysates (35 $\mu$ g protein in RIPA buffer). Primary incubation was 1 hour. Detected by chemiluminescence.