

## Anti-PRRX1 antibody (Internal) (STJ71357)

### GENERAL INFORMATION

Product Type	Primary antibodies
Applications	Pep-ELISA/WB
Host / Source	Goat
Reactivity	Human/Mouse/Rat

### PRODUCT PROPERTIES

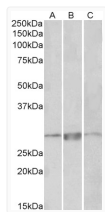
Clonality	Polyclonal
Conjugation	Unconjugated
Purification	Purified from goat serum by ammonium sulphate precipitation followed by antigen affinity chromatography using the immunizing peptide.
Dilution Range	Peptide ELISA: antibody detection limit dilution 1:2000. WB: Approx 28kDa band observed in Human, Mouse and Rat Heart lysates (calculated MW of 27.3kDa according to NP_073207.1). Recommended concentration: 1-3µg/ml.
Formulation	0.5 mg/ml in Tris saline, 0.02% sodium azide, pH7.3 with 0.5% bovine serum albumin. NA
Isotype	IgG
Storage Instruction	Store at -20°C on receipt and minimise freeze-thaw cycles.

### TARGET INFORMATION

Gene ID	<a href="#">5396</a>
Gene Symbol	<a href="#">PRRX1</a>
UniProt ID	<a href="#">PRRX1_HUMAN</a>
Immunogen Region	Internal
Immunogen Sequence	QADENVGEAGRS
Specificity	This antibody is expected to recognise both reported isoforms (NP_008833.1; NP_073207.1) ;Concentration=0.5 mg/mL"

### ADDITIONAL INFORMATION

Note STRICTLY FOR FURTHER SCIENTIFIC RESEARCH USE ONLY (RUO). MUST NOT TO BE USED IN DIAGNOSTIC OR THERAPEUTIC APPLICATIONS.



STJ71357 (1µg/ml) staining of Human Heart lysate (35µg protein in RIPA buffer). Primary incubation was 1 hour. Detected by chemiluminescence.