

Anti-BAG3 antibody (Internal) (STJ71337)

GENERAL INFORMATION

Product Type	Primary antibodies
Applications	Pep-ELISA/WB/IHC
Host / Source	Goat
Reactivity	Human

PRODUCT PROPERTIES

Clonality	Polyclonal
Concentration	0.5 mg/mL
Conjugation	Unconjugated
Purification	Purified from goat serum by ammonium sulphate precipitation followed by antigen affinity chromatography using the immunizing peptide.
Dilution Range	Peptide ELISA: antibody detection limit dilution 1:16000. WB: Approx 70kDa band observed in Human Pancreas lysates (calculated MW of 61.6kDa according to NP_004272.2). Recommended concentration: 0.1-0.3µg/ml. Primary incubation was 1 hour. IH
Formulation	0.5 mg/ml in Tris saline, 0.02% sodium azide, pH7.3 with 0.5% bovine serum albumin. NA
Isotype	IgG
Storage Instruction	Store at -20°C on receipt and minimise freeze-thaw cycles.

TARGET INFORMATION

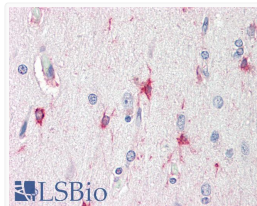
Gene ID	9531
Gene Symbol	BAG3
UniProt ID	BAG3_HUMAN
Immunogen Region	Internal
Immunogen Sequence	KNAGNAEDPHTE

ADDITIONAL INFORMATION

Note STRICTLY FOR FURTHER SCIENTIFIC RESEARCH USE ONLY (RUO). MUST NOT TO BE USED IN DIAGNOSTIC OR THERAPEUTIC APPLICATIONS.



STJ71337 (0.1 µg/ml) staining of Human Pancreas lysate (35 µg protein in RIPA buffer). Detected by chemiluminescence.



STJ71337 (5 µg/ml) staining of paraffin embedded Human Cortex. Steamed antigen retrieval with citrate buffer pH 6, AP-staining.