

Anti-KCNQ4 antibody (Internal) (STJ71324)

GENERAL INFORMATION

Product Type	Primary antibodies
Applications	Pep-ELISA/WB
Host / Source	Goat
Reactivity	Human

PRODUCT PROPERTIES

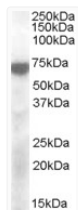
Clonality	Polyclonal
Conjugation	Unconjugated
Purification	Purified from goat serum by ammonium sulphate precipitation followed by antigen affinity chromatography using the immunizing peptide.
Dilution Range	Peptide ELISA: antibody detection limit dilution 1:4000. WB: Approx 70kDa band observed in Human Brain (Cerebellum) lysates (calculated MW of 71.2kDa according to NP_751895.1). Recommended concentration: 1-3µg/ml.
Formulation	0.5 mg/ml in Tris saline, 0.02% sodium azide, pH7.3 with 0.5% bovine serum albumin. NA
Isotype	IgG
Storage Instruction	Store at -20°C on receipt and minimise freeze-thaw cycles.

TARGET INFORMATION

Gene ID	9132
Gene Symbol	KCNQ4
UniProt ID	KCNQ4_HUMAN
Immunogen Region	Internal
Immunogen Sequence	DKGPSDAEVDVDE
Specificity	This antibody is expected to recognise both reported isoforms (NP_004691.2; NP_751895.1) ; may cross-react in Mouse;Concentration=0.5 mg/mL"

ADDITIONAL INFORMATION

Note STRICTLY FOR FURTHER SCIENTIFIC RESEARCH USE ONLY (RUO). MUST NOT TO BE USED IN DIAGNOSTIC OR THERAPEUTIC APPLICATIONS.



STJ71324 (2µg/ml) staining of Cerebellum lysate (35µg protein in RIPA buffer). Primary incubation was 1 hour. Detected by chemiluminescence.