

Anti-GIRK2/KCNJ6 antibody (C-Term) (STJ71310)

GENERAL INFORMATION

| | |
|---------------|--------------------|
| Product Type | Primary antibodies |
| Applications | Pep-ELISA/WB/ICC |
| Host / Source | Goat |
| Reactivity | Human/Mouse/Rat |

PRODUCT PROPERTIES

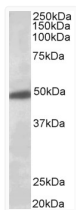
| | |
|---------------------|-----------------------------------------------------------------------------------------------------------------------------------------------------------------------------------------------------------------------------------------------------------|
| Clonality | Polyclonal |
| Concentration | 0.5 mg/mL |
| Conjugation | Unconjugated |
| Purification | Purified from goat serum by ammonium sulphate precipitation followed by antigen affinity chromatography using the immunizing peptide. |
| Dilution Range | Peptide ELISA: antibody detection limit dilution 1:32000. WB: Approx 48kDa band observed in Human Brain (Hippocampus and Substantia Nigra) lysates (calculated MW of 48.5kDa according to NP_002231.1). Recommended concentration: 2-6µg/ml. Primary i |
| Formulation | 0.5 mg/ml in Tris saline, 0.02% sodium azide, pH7.3 with 0.5% bovine serum albumin. NA |
| Isotype | IgG |
| Storage Instruction | Store at -20°C on receipt and minimise freeze-thaw cycles. |

TARGET INFORMATION

| | |
|--------------------|-----------------------------|
| Gene ID | 3763 |
| Gene Symbol | KCNJ6 |
| UniProt ID | KCNJ6_HUMAN |
| Immunogen Region | C-Term |
| Immunogen Sequence | SSKLNQHAELET |

ADDITIONAL INFORMATION

Note STRICTLY FOR FURTHER SCIENTIFIC RESEARCH USE ONLY (RUO). MUST NOT TO BE USED IN DIAGNOSTIC OR THERAPEUTIC APPLICATIONS.



STJ71310 (0.5 µg/ml) staining of Human Brain (Substantia Nigra) lysate (35 µg protein in RIPA buffer). Detected by chemiluminescence.