

## Anti-Myelin Protein zero antibody (Internal) (STJ71252)

### GENERAL INFORMATION

Product Type	Primary antibodies
Applications	Pep-ELISA/WB
Host / Source	Goat
Reactivity	Human/Mouse/Rat/Dog

### PRODUCT PROPERTIES

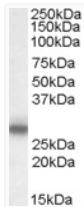
Clonality	Polyclonal
Concentration	0.5 mg/mL
Conjugation	Unconjugated
Purification	Purified from goat serum by ammonium sulphate precipitation followed by antigen affinity chromatography using the immunizing peptide.
Dilution Range	Peptide ELISA: antibody detection limit dilution 1:32000. WB: Approx 28kDa band observed in Rat Spinal Cord lysates (calculated MW of 28.5kDa according to Human NP_000521.1 and of 27.7kDa according to Rat NP_058723.1). Recommended concentration:
Formulation	0.5 mg/ml in Tris saline, 0.02% sodium azide, pH7.3 with 0.5% bovine serum albumin. NA
Isotype	IgG
Storage Instruction	Store at -20°C on receipt and minimise freeze-thaw cycles.

### TARGET INFORMATION

Gene ID	<a href="#">4359</a>
Gene Symbol	<a href="#">MPZ</a>
UniProt ID	<a href="#">MYPO_HUMAN</a>
Immunogen Region	Internal
Immunogen Sequence	DHSRSTKAVSEK
Specificity	The presence of this PNS protein in Rat Spinal Cord is likely due to contamination with spinal roots during extraction from the animal.

### ADDITIONAL INFORMATION

Note STRICTLY FOR FURTHER SCIENTIFIC RESEARCH USE ONLY (RUO). MUST NOT TO BE USED IN DIAGNOSTIC OR THERAPEUTIC APPLICATIONS.



STJ71252 (0.1 µg/ml) staining of Rat Spinal Cord lysate (35 µg protein in RIPA buffer). Primary incubation was 1 hour. Detected by chemiluminescence.