

## Anti-PDE11A antibody (Internal) (STJ71246)

### GENERAL INFORMATION

Product Type	Primary antibodies
Applications	Pep-ELISA/WB/IHC
Host / Source	Goat
Reactivity	Human/Mouse/Rat/Dog

### PRODUCT PROPERTIES

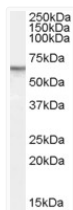
Clonality	Polyclonal
Concentration	0.5 mg/mL
Conjugation	Unconjugated
Purification	Purified from goat serum by ammonium sulphate precipitation followed by antigen affinity chromatography using the immunizing peptide.
Dilution Range	Peptide ELISA: antibody detection limit dilution 1:2000. WB: Approx 60-65kDa band observed in Human Skeletal Muscle and Human Prostate lysates (calculated MW of 65.7kDa according to NP_001070826.1). Recommended concentration: 0.5-1.5µg/ml. IH
Formulation	0.5 mg/ml in Tris saline, 0.02% sodium azide, pH7.3 with 0.5% bovine serum albumin. NA
Isotype	IgG
Storage Instruction	Store at -20°C on receipt and minimise freeze-thaw cycles.

### TARGET INFORMATION

Gene ID	<a href="#">50940</a>
Gene Symbol	<a href="#">PDE11A</a>
UniProt ID	<a href="#">PDE11_HUMAN</a>
Immunogen Region	Internal
Immunogen Sequence	NSFKESMEKSSYSYD
Specificity	This antibody is expected to recognise all four reported isoforms (NP_058649.3 ; NP_001070665.1; NP_001070826.1; NP_001070664.1).

### ADDITIONAL INFORMATION

Note STRICTLY FOR FURTHER SCIENTIFIC RESEARCH USE ONLY (RUO). MUST NOT TO BE USED IN DIAGNOSTIC OR THERAPEUTIC APPLICATIONS.



STJ71246 (1µg/ml) staining of Human Prostate lysate (35µg protein in RIPA buffer). Primary incubation was 1 hour. Detected by chemiluminescence.