

Anti-Fumarase/FH antibody (Internal) (STJ71221)

GENERAL INFORMATION

| | |
|---------------|---------------------|
| Product Type | Primary antibodies |
| Applications | Pep-ELISA/WB/IHC |
| Host / Source | Goat |
| Reactivity | Human/Mouse/Rat/Dog |

PRODUCT PROPERTIES

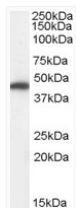
| | |
|---------------------|---|
| Clonality | Polyclonal |
| Concentration | 0.5 mg/mL |
| Conjugation | Unconjugated |
| Purification | Purified from goat serum by ammonium sulphate precipitation followed by antigen affinity chromatography using the immunizing peptide. |
| Dilution Range | Peptide ELISA: antibody detection limit dilution 1:64000. WB: Approx 48kDa band observed in Human Kidney, Liver and Lung lysates (calculated MW of 54.6kDa according to NP_000134.2). The observed molecular weight corresponds to earlier findings wi |
| Formulation | 0.5 mg/ml in Tris saline, 0.02% sodium azide, pH7.3 with 0.5% bovine serum albumin. NA |
| Isotype | IgG |
| Storage Instruction | Store at -20°C on receipt and minimise freeze-thaw cycles. |

TARGET INFORMATION

| | |
|--------------------|----------------------------|
| Gene ID | 2271 |
| Gene Symbol | FH |
| UniProt ID | FUMH_HUMAN |
| Immunogen Region | Internal |
| Immunogen Sequence | HPNDHVNKSQSSND |

ADDITIONAL INFORMATION

Note STRICTLY FOR FURTHER SCIENTIFIC RESEARCH USE ONLY (RUO). MUST NOT TO BE USED IN DIAGNOSTIC OR THERAPEUTIC APPLICATIONS.



STJ71221 (0.01 µg/ml) staining of Human Kidney lysate (35 µg protein in RIPA buffer). Detected by chemiluminescence.