

## Anti-MYLK antibody (Internal) (STJ71215)

### GENERAL INFORMATION

Product Type	Primary antibodies
Applications	Pep-ELISA/WB
Host / Source	Goat
Reactivity	Human/Mouse

### PRODUCT PROPERTIES

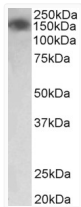
Clonality	Polyclonal
Concentration	0.5 mg/mL
Conjugation	Unconjugated
Purification	Purified from goat serum by ammonium sulphate precipitation followed by antigen affinity chromatography using the immunizing peptide.
Dilution Range	Peptide ELISA: antibody detection limit dilution 1:8000. WB: Approx 150kDa band observed in Human Colon and Lung lysates (calculated MW of 197kDa according to NP_444256.3). Recommended concentration: 0.01-0.03µg/ml.
Formulation	0.5 mg/ml in Tris saline, 0.02% sodium azide, pH7.3 with 0.5% bovine serum albumin. NA
Isotype	IgG
Storage Instruction	Store at -20°C on receipt and minimise freeze-thaw cycles.

### TARGET INFORMATION

Gene ID	<a href="#">4638</a>
Gene Symbol	<a href="#">MYLK</a>
UniProt ID	<a href="#">MYLK_HUMAN</a>
Immunogen Region	Internal
Immunogen Sequence	KDTKNMEAKKLSKD
Specificity	This antibody is expected to recognise all reported isoforms (NP_444253.3; NP_444254.3 ; NP_444255.3 and NP_444256.3).

### ADDITIONAL INFORMATION

Note STRICTLY FOR FURTHER SCIENTIFIC RESEARCH USE ONLY (RUO). MUST NOT TO BE USED IN DIAGNOSTIC OR THERAPEUTIC APPLICATIONS.



STJ71215 (0.03µg/ml) staining of Human Colon lysate (35µg protein in RIPA buffer). Primary incubation was 1 hour. Detected by chemiluminescence.