

## Anti-PTF1A/PFT1-P48 antibody (Internal) (STJ71203)

### GENERAL INFORMATION

|               |                               |
|---------------|-------------------------------|
| Product Type  | Primary antibodies            |
| Applications  | Pep-ELISA/WB                  |
| Host / Source | Goat                          |
| Reactivity    | Human/Mouse/Rat/Dog/Zebrafish |

### PRODUCT PROPERTIES

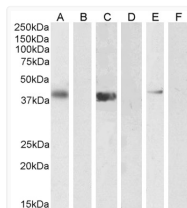
|                     |   |
|---------------------|---|
| Clonality           | Polyclonal  |
| Concentration       | 0.5 mg/mL   |
| Conjugation         | Unconjugated  |
| Purification        | Purified from goat serum by ammonium sulphate precipitation followed by antigen affinity chromatography using the immunizing peptide.   |
| Dilution Range      | Peptide ELISA: antibody detection limit dilution 1:128000.<br>WB: Approx 37kDa observe in Human Pancreas lysates and approx.38-40kDa in lysates of cell lines Jurkat, U2OS and NIH3T3. (calculated MW of 35.0kDa according to Human NP_835455.1 and 35.2k |
| Formulation         | 0.5 mg/ml in Tris saline, 0.02% sodium azide, pH7.3 with 0.5% bovine serum albumin. NA  |
| Isotype             | IgG   |
| Storage Instruction | Store at -20°C on receipt and minimise freeze-thaw cycles.  |

### TARGET INFORMATION

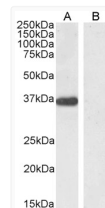
|                    |                             |
|--------------------|-----------------------------|
| Gene ID            | <a href="#">256297</a>      |
| Gene Symbol        | <a href="#">PTF1A</a>       |
| UniProt ID         | <a href="#">PTF1A_HUMAN</a> |
| Immunogen Region   | Internal                    |
| Immunogen Sequence | WTDEKQLKEQN                 |

### ADDITIONAL INFORMATION

Note STRICTLY FOR FURTHER SCIENTIFIC RESEARCH USE ONLY (RUO). MUST NOT TO BE USED IN DIAGNOSTIC OR THERAPEUTIC APPLICATIONS.



STJ71203 (1µg/ml) staining of U2OS (A) + peptide (B), (0.5µg/ml) Jurkat (C) + peptide (D) and NIH3T3 (E) + peptide (F) cell lysate (35µg protein in RIPA buffer). Detected by chemiluminescence.



STJ71203 (0.5µg/ml) staining of Human Pancreas lysate (35µg protein in RIPA buffer). Detected by chemiluminescence.