

Anti-DPP4/CD26 antibody (Internal) (STJ71202)

GENERAL INFORMATION

Product Type	Primary antibodies
Applications	Pep-ELISA/IHC/FC
Host / Source	Goat
Reactivity	Human/Mouse/Rat

PRODUCT PROPERTIES

Clonality	Polyclonal
Concentration	0.5 mg/mL
Conjugation	Unconjugated
Purification	Purified from goat serum by ammonium sulphate precipitation followed by antigen affinity chromatography using the immunizing peptide.
Dilution Range	Peptide ELISA: antibody detection limit dilution 1:64000. IHC: Paraffin embedded Human Prostate. Recommended concentration: 8µg/ml. FC: Flow cytometric analysis of HepG2 cells. Recommended concentration: 10ug/ml.
Formulation	0.5 mg/ml in Tris saline, 0.02% sodium azide, pH7.3 with 0.5% bovine serum albumin. NA
Isotype	IgG
Storage Instruction	Store at -20°C on receipt and minimise freeze-thaw cycles.

TARGET INFORMATION

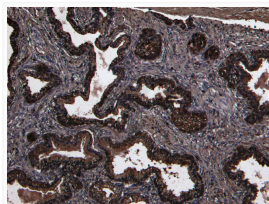
Gene ID	1803
Gene Symbol	DPP4
UniProt ID	DPP4_HUMAN
Immunogen Region	Internal
Immunogen Sequence	PPHFDKSKKYP

ADDITIONAL INFORMATION

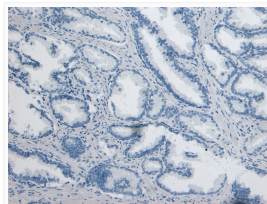
Note **STRICTLY FOR FURTHER SCIENTIFIC RESEARCH USE ONLY (RUO). MUST NOT TO BE USED IN DIAGNOSTIC OR THERAPEUTIC APPLICATIONS.**



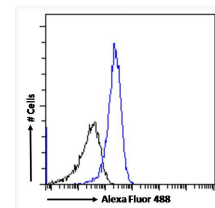
STJ71202 (0.3µg/ml) staining of Rat Lung lysate (35µg protein in RIPA buffer). Detected by chemiluminescence.



STJ71202 (8µg/ml) staining of paraffin embedded Human Prostate. Heat induced antigen retrieval with citrate buffer pH 6, HRP-staining.



STJ71202 Negative Control showing staining of paraffin embedded Human Prostate, with no primary antibody.



STJ71202 Flow cytometric analysis of paraformaldehyde fixed HepG2 cells (blue line), permeabilized with 0.5% Triton. Primary incubation 1hr (10ug/ml) followed by Alexa Fluor 488 secondary antibody (1ug/ml). IgG control: Unimmunized goat IgG (black line) followed by Alexa Fluor 488 secondary antibody.