

Anti-TGM2 antibody (Internal) (STJ71197)

GENERAL INFORMATION

| | |
|---------------|--------------------|
| Product Type | Primary antibodies |
| Applications | Pep-ELISA/WB/IHC |
| Host / Source | Goat |
| Reactivity | Human |

PRODUCT PROPERTIES

| | |
|---------------------|--|
| Clonality | Polyclonal |
| Concentration | 0.5 mg/mL |
| Conjugation | Unconjugated |
| Purification | Purified from goat serum by ammonium sulphate precipitation followed by antigen affinity chromatography using the immunizing peptide. |
| Dilution Range | Peptide ELISA: antibody detection limit dilution 1:128000. WB: Approx. 70kDa band observed in K562, 70+80kDa in Caco-2 and 70+85kDa in A549 cell lysates, and approx. 80kDa in Human Placenta lysates (calculated MW of 70.3kDa according to NP_001310) |
| Formulation | 0.5 mg/ml in Tris saline, 0.02% sodium azide, pH7.3 with 0.5% bovine serum albumin. NA |
| Isotype | IgG |
| Storage Instruction | Store at -20°C on receipt and minimise freeze-thaw cycles. |

TARGET INFORMATION

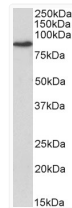
| | |
|--------------------|--|
| Gene ID | 7052 |
| Gene Symbol | TGM2 |
| UniProt ID | TGM2_HUMAN |
| Immunogen Region | Internal |
| Immunogen Sequence | NFESDKLKAVKGFR |
| Specificity | This antibody is expected to recognise isoform a (NP_004604.2) only. |

ADDITIONAL INFORMATION

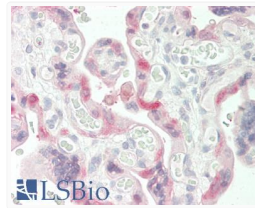
Note **STRICTLY FOR FURTHER SCIENTIFIC RESEARCH USE ONLY (RUO). MUST NOT TO BE USED IN DIAGNOSTIC OR THERAPEUTIC APPLICATIONS.**



STJ71197 (0.03 µg/ml) staining of Human Lung lysate (35 µg protein in RIPA buffer). Primary incubation was 1 hour. Detected by chemiluminescence.



STJ71197 (0.1 µg/ml) staining of A549 lysate (35 µg protein in RIPA buffer). Primary incubation was 1 hour. Detected by chemiluminescence.



STJ71197 (5 µg/ml) staining of paraffin embedded Human Placenta. Steamed antigen retrieval with citrate buffer pH 6, AP-staining.