

Anti-EBF1/COE1 antibody (Internal) (STJ71185)

GENERAL INFORMATION

Product Type	Primary antibodies
Applications	Pep-ELISA/WB/IP
Host / Source	Goat
Reactivity	Human/Mouse/Rat

PRODUCT PROPERTIES

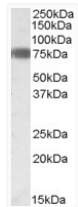
Clonality	Polyclonal
Concentration	0.5 mg/mL
Conjugation	Unconjugated
Purification	Purified from goat serum by ammonium sulphate precipitation followed by antigen affinity chromatography using the immunizing peptide.
Dilution Range	Peptide ELISA: antibody detection limit dilution 1:64000. WB: Approx. 75kDa band observed in Human Adipose lysates (calculated MW of 64.5kDa according to NP_076870.1). Recommended concentration: 0.3-0.1 µg/ml. IP: Anonymous customer used this
Formulation	0.5 mg/ml in Tris saline, 0.02% sodium azide, pH7.3 with 0.5% bovine serum albumin. NA
Isotype	IgG
Storage Instruction	Store at -20°C on receipt and minimise freeze-thaw cycles.

TARGET INFORMATION

Gene ID	1879
Gene Symbol	EBF1
UniProt ID	COE1_HUMAN
Immunogen Region	Internal
Immunogen Sequence	HNQLPALANTSV
Specificity	This antibody is expected not to cross-react with EBF2, EBF3 and EBF4.

ADDITIONAL INFORMATION

Note STRICTLY FOR FURTHER SCIENTIFIC RESEARCH USE ONLY (RUO). MUST NOT TO BE USED IN DIAGNOSTIC OR THERAPEUTIC APPLICATIONS.



STJ71185 (0.3 µg/ml) staining of Human Adipose lysate (35 µg protein in RIPA buffer). Primary incubation was 1 hour. Detected by chemiluminescence.